



J01 JOHNDEERE AT21381 VOLAN



J02 JOHNDEERE AT21382 VOLAN



J04 JOHNDEERE L33483 FREN PİSTONU



J05 JOHNDEERE L31016 FREN PİSTONU



J06 JOHNDEERE L33910 FREN PİSTONU



J08 JOHNDEERE AR 85250 DEVİRDAİM



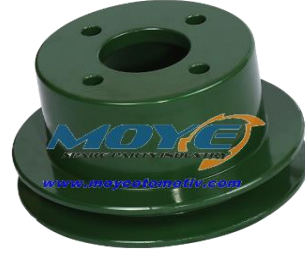
**J11 JOHNDEERE AR76290 BİÇER DÖVER
DEVİRDAİM**



**J12 JOHNDEERE AR97710 BİÇER DÖVER
DEVİRDAİM**



**J14 JOHNDERE T20270 DEVİRDAİM
ALT KAPAĞI**



**J15 JOHNDERE T26850
DEVİRDAİM KASNAĞI TEK KAYIŞ**



**J17 JOHNDERE T20249 EGZOZ
MANİFOLDU**



**J18 JOHNDERE T20252 EGZOZ
MANİFOLDU**



J21 JOHNDERE R47076 ÖN PORYA



J22 JOHNDERE T21545 ÖN PORYA



**J23 JOHNDERE A1555R
ÖN PORYA KAPAĞI**



**J24 JOHNDERE T22914 JİDROLİK
POMPA ARA ŞAFTI**



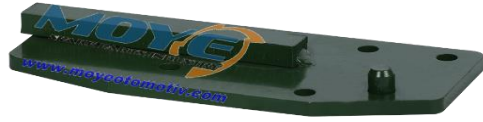
**J26 JOHNDEERE L34572 HİDROLİK
POMPA ARA ŞAFTI**



**J27-J28 JOHNDEERE T30276-77
YAN DAYAMA TAKOZU**



**J29-J30 JOHNDEERE R39512-13
YAN DAYAMA TAKOZU**



**J31-J32 JOHNDEERE AT20167-68
YAN DAYAMA SACI**



**J33 JOHNDEERE T20317 TERMOSTAT
YUVASI DİK**



J37 JOHNDEERE AL19730 ÖN AKSON



**J38-J39-J40 JOHNDEERE AR58606-07-08
ÖN AKSON**



**J41 JOHNDEERE L26932 HASSASİYET
MİLİ**



**J42 JOHNDEERE L31199 HASSASİYET
MİLİ**



**J43 JOHNDEERE L41787 HASSASİYET
MİLİ**



**J44 JOHNDEERE L41819 HASSASİYET
MİLİ**



**J45-J46-J47-J48-J49 JOHNDEERE
HASSASİYET MİL TAKOZLARI**



J53 JOHNDEERE R53817 VİTES MİLİ



**J54 JOHNDEERE T31498 PATİNAJ KİLİT
KOLU DÜZ TİP**



**J55 JOHNDEERE T27429 PATİNAJ KİLİT
KOLU Z TİP**



**J56 JOHNDEERE AT26771 DEBRİYAJ
AYAR ÇATALI**



J57 JOHNDEERE AL19725 ÖN DİNGİL PİMİ



**J58 JOHNDEERE T21778 ÖN SPOT PİMİ
FATURALI**



**J59 JOHNDEERE T21669 ÖN DİNGİL
PERNOSU PİMİ DELİKLİ**



**J63 JOHNDEERE T28915 SİNYAL
LAMBA AYAĞI**



**J65 JOHNDEERE T30721 SU POMPA
KASNAĞI ALÜMİNYUM**



**J68-J69 JOHNDEERE AR55695-AT21754
HİDROLİK AYARLI KOL ÇATAL PİMLERİ**



**J71 JOHNDEERE L34432-L34569 POMPA
KAPLİNİ TAKIM**



**J73 JOHNDEERE RE42480M HASSASİYET
MİLİ**



**J74 JOHNDEERE R48595 HİDROLİK AYARLI
KOL ÇATALI**



**J79 JOHNDEERE T21685 ORTAKOL
MESNEDİ**



**J80 JOHNDEERE L31943 KUYRUK MİLİ
KUMANDA KOLU**



**J81 JOHNDEERE L34570 HİDROLİK POMPA
ARA ŞAFTI**



J83 JOHNDEERE T27430 PATİNAJ PEDALI



**J85-J86 JOHNDEERE L25283 ÇAMURLUK
TAKOZU**



J87 JOHNDEERE R59312 KRANK KASNAĞI



**E01 İTER 444 7613001-01 EGZOZ
MANIFOLDU**



**E02 İTER 444 3072544 R1Y EGZOZ BOYUN
ÇIKIŞ DİRSEĞİ**



**E03 İTER 444 76040003 M DEVİRDAİM
POMPASI**



**E04 İTER 444 703825R11 DEVİRDAİM GERĞİ
SOMUNU**



**E05 İTER 444 76040008 DEVİRDAİM
KASNAĞI SOMUNSUZ**



**E06 İTER 444 40071504 DEBRİYAJ
ÇATALI**



E07 İTER 444 443091530 ÖN PORYA



**E08 İTER 444 306942 R1 TERMOSTAT
YUVASI**



**E09 İNTER 444 3046391R-2 KRANK
KASNAĐI**



**E10 İNTER 444 704207 R3Y HİDROLİK
MAFSAL**



**E11 İNTER 444 3048532 R1 DEBRİYAJ
K M R KARŐILIĐI**



**E12 İNTER 444 3065126 R1 TERMOSTAT
KAPAĐI**



**E13 İNTER 444 40061517 FREN DİSK SACI
TAKIM**



**E14 İNTER 444 3043868  N PORYA
HİNDİSTAN 6 BİJON**



**E15-E16 İNTER 444 3071402-01 R11
FREN KOVANI**



**E17 İNTER 444 40061510M2
FREN DİSKİ TAKIM**



**E18 İNTER 444 DEBRİYAJ
KÖMÜR KARŞILIĞI 3 AYAK**



**E19 İNTER 444 40061521 FREN DİSK
YAYI VE BİLYASI**



**İN01 İTER 654 3 056853 R51 Y
ÖN EKSANTRİK KAPAK**



**İN02 İTER 654 3 136764 R1 Y
SU KANALI ALÜMİNYUM**



**İN03 İTER 654 3 136217 R91 Y
KAMYON DEVİRDAİM**



İN04 İTER 654 3 055178 R1 Y DEVİRDAİM



**İN05 İTER 654 3 058003 R1 Y EGZOZ
MANİFOLDU**



**İN06 İTER 654 40021501-1 ROT KOLU
TEK**



**İN07 İTER 654 443091503-04 ROT KOLU
ÇİFTLİ**



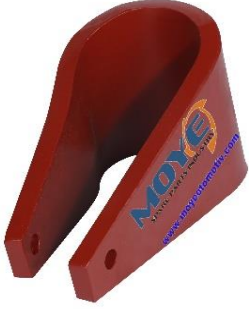
**İN08 İTER 654 3 32811522-2 EGZOZ
MANİFOLD DİRSEĞİ**



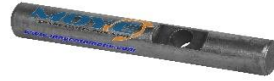
İN09 İNTER 654 4 43091530 ÖN PORYA



İN10 İNTER 654 4 43201518 M FREN DİSKİ



İN11 İNTER 654 3 138834 R1 Y HİDROLİK YAPRAK YAY



İN12-İN13 İNTER 654 4 44251560-4 44251537-1 HİDROLİK PİMLER



İN14 İNTER 654 3 0555181 KÜLBÜTÖR KAPAK



İN15 İNTER 654 4 4425157 M1 HİDROLİK MESNET KRANK



İN16 İNTER 654 7 04207 R3 Y HİDROLİK MAFSAL



İN17 İNTER 654 3 058378 R2 DEBRİYAJ KÖMÜR KARŞILIĞI



**İN18 İNTER 654 3 136764 R1
Y SU KANALI PİK**



İN19 İNTER 654 ÖN AKSON UZUN



İN20 İNTER 654 ÖN AKSON KISA



**İN21 İNTER 654 443301503 DEBRİYAJ
ÇATALI**



**İN22 İNTER 624- IH 787004R22
FREN DİSKİ**



**İN23 İNTER 654 ÇOLAK ROT KOLU
TEK PARÇA**



**İN24 İNTER 654 3057015R1Y VİTES
KAPAĞI**



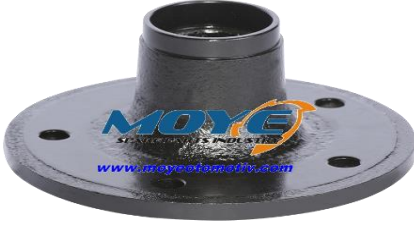
İN25 İNTER 654 SU MANİFOLDU



**S01 STEYR 768- 308000605 DEVİRDAİM
POMPASI**



S04 STEYR 768- 28841131 ÖN PORYA PİK



**S05 STEYR 768 - 28841131-1 ÖN PORYA
ÇELİK**



**S07 STEYR 8053 - 307110008
EGZOZ DİRSEĞİ**



**S08 STEYR 768 - 407110024 EGZOZ
DİRSEĞİ**



**S09 STEYR 8033/8043- 317540008
EGZOZ DİRSEĞİ**



**S10 STEYR 8053- 307110004
EGZOZ MANİFOLDU**



**S11 STEYR 8043-31185112
EGZOZ MANİFOLDU**



**S12 STEYR 768-40711007
EGZoz MANİFOLDU**



S15 STEYR 295930004 ÇEKİ PİMİ



S16 STEYR 292730051 DÖNER ÇEKİ



L01 LEYLAND 154-12H3016 DEVİRDAİM POMPASI



L02 LEYLAND 154 DEVİRDAİM POMPASI KÜÇÜK KAFA



L03 LEYLAND 154- T4C9112 HİDROLİK AYARLI KOL KOMPLE



L04 LEYLAND 154 -BTJ6144/T4C6060 HİDROLİK YAN KOL FREZELİ



L05 LEYLAND 154-BTJ6032 EGZOZ MANİFOLDU



L07 LEYLAND 154-BTJ6032 HİDROLİK AYARLI KOL ÇATALI



L08-L09 LEYLAND MBU1100-GWP 145 DEVİRDAİM POMPALARI



L10-L11 LEYLAND 154 KRANK KASNAĞI



L12 LEYLAND 154 TERMOSTAT YUVASI



L13 LEYLAND 154 ÇAPRAZ MİL



L17-L18 LEYLAND 154 ÖN AKSON



**L20 LEYLAND 154 DEBRIYAJ KOMÜR
KARŞILIĞI**



L22 LEYLAND 184 KRANK KASNAĞI



M01 MAJOR EGZOZ MANİFOLDU



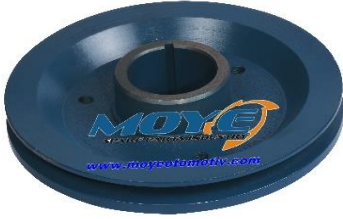
M02 MAJOR EGZOZ MANİFOLD DİRSEĞİ



M06 MAJOR EGZOZ MANİFOLDU



M07 MAJOR FREN BALATASI ÇAKILI



M08 MAJOR KRANK KASNAĞI PİK



**İ01-İ02 İŞBORA 145016221-11
DEVİRDAİMLER**



İ05 İŞBORA 330460120 ÖN PORYA



İ06-İ07 İŞBORA 330310341-51 ÖN AKS



**İ08-İ09-İŞBORA 145216060-1 / 145216060
TERMOSTAT YUVASI**



**İ10-İ11-İŞBORA 115396060-115396230
KRANK KASNAĞI**



İ14 İŞBORA 370900120 HİDROLİK T PİMİ



**İ16 İŞBORA 135616040 EGZOZ MANİFOLDU
4CYL**



**İ17 İŞBORA 135616030 EGZOZ
MANİFOLDU 2 CYL**



İ18 İŞBORA 328510050 FREN KAMPANASI



**İ22 İŞBORA 322110321 ÖN ÇEKER
REDÜKTÖR KAPAĞI**



İ25 İŞBORA 334600070 ROT KOLU SOL



İ26 İŞBORA 334520250 ROT KOLU SAĞ



**İ29 İŞBORA 115226010 TERMOSTAT
KAPAĞI**



B01 NUFFIELD AMK671 EGZUZ MANİFOLD



B03 NUFFIELD AMK2806 DEİRDAİM



B04 NUFFIELD CMK2044 DEİRDAİM



B05 NUFFIELD NT4243 EGZUZ DİRSEĐİ



U01 UNİVERSAL 550 SU MANİFOLDU



**U02 UNIVERSAL 683 EGZOZ MANIFOLDU
İKİ PARÇA**



U03 UNİVERSAL 550 EGZOZ MANİFOLDU



**F01 FIAT 480-511655 MANIFOLD DIRSEGI
(YUKARI)**



F11 FIAT 415-572769 EGZOZ MANIFOLDU



**F12 FIAT 480-640 - 5086398 AKSON
MESAFE BURCU**



**F13 FIAT 60-56/70-56-5164163 EGZOZ
MANIFOLD DIRSEĞİ Y.M**



F14 FIAT 480-54C - 7150217 EGZOZ MANIFOLDI



**F15 FIAT 640-65-46 - 7150217 EGZOZ
MANIFOLDU 4 CYL**



**F16 FIAT 70-66 80-66 TMSN 5096546 EGZOZ
MANIFOLD DIRSEĞİ TURBO**



**F17 FIAT 70-66 80-66 TMSN 4760060
EMME MANIFOLDU**



**F18 FIAT 70-66 80-66 TMSN 99440113 EGZOZ
MANIFOLDU TURBO**



**F19 FIAT 8280 TMSN 7150225 EGZOZ
MANIFOLDU**



**MF03 MF 240 1865514 EGZOZ MANİFOLD
DİRSEĞİ YUKARI**



**MF04 MF 165-285 EGZOZ MANIFOLD
DİRSEĞİ YUKARI**



**MF05 MF 165 160974 EGZOZ MANİFOLD
ARA EKİ**



MF06 MF GOLD EGZOZ MANİFOLD ARA EKİ



MF09-135 HİDROLİK MAFSAL



**D01 DEXTA 957E9430A EGZOZ
MANIFOLDU**



SM04 SAME ÖN AKSON



SU01 SUPERSTAR M717000K DEVİRDAİM



Z01 ZETOR DEVİRDAİM KASNAĞI



Z02 ZETOR DEBRİYAJ ÇATALI



Z04 ZETOR DİREKSİYON SEKTÖRÜ



Z05 ZETOR ÖN AKSON



Z06 ZETOR TERMOSTAT YUVASI



Z07 ZETOR VİTES HİLALİ



Z08 ZETOR ROT KOLU



Z09 ZETOR PİYANO TUŞU



Z10 ZETOR PINYON



Z11 ZETOR ŞANZUMAN VİTES KİLİDİ

